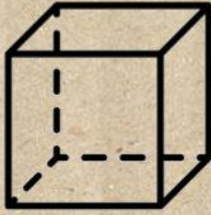


**DESIGN  
CUBES**

Roll with the creativity



# The Problem

~~Problems~~  
Solutions

INSPIRATION



Our team discovered the problem we needed to design while trying to design when struggling for an idea.

We then used our struggle of inspiration to create a solution for others experiencing the same struggle



INITIAL THOUGHTS

Phone charger  
Holder

Design Cubes!!

Milk bottle  
holder

Target market

We decided that the target market that would best suit the problem we were trying to defeat would be design enthusiasts.



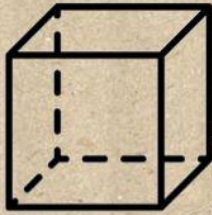
The brief and the problem we were trying to help corresponds perfectly to all design enthusiasts problems when trying to design themselves.

We later discovered that the product we go on and design could suit the qualities for a family in the form of a fun design themed

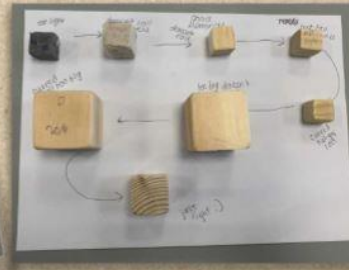
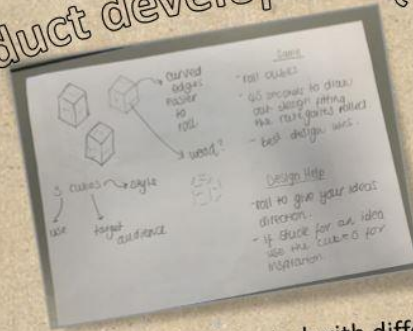


# DESIGN CUBES

Roll with the creativity



## Product development



We experimented with different materials masses and weights and found the combination that worked the best. We created a wooden cube that's 3 by 3 by 3 cm and featured curved edges.

Make it tightly compact to try and use less packaging



Made out of cardboard- most sustainable packaging material and easiest to use!

## Sustainability of our product

Cubes themselves are made of wood because wood is a sustainable source. It grows naturally and can be harvested in sustainable ways. - We decided to make our product out of wood instead of plastic because wood is more sustainable.

Not use too much ink-minimalistic not too many unnecessary patterns or images

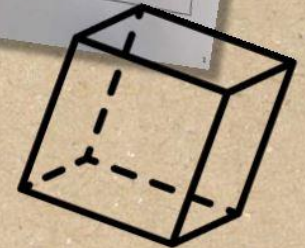
Not use too many colours-only using black

## Logo and slogan



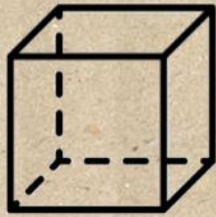
Possible slogans

- Redesign the world
- Cubes of creativity
- Role it. Think it. Draw it.
- Role with the creativity.



# DESIGN CUBES

Roll with the creativity



Design on cube

CUBE #1



CUBE #2



CUBE #3



packaging

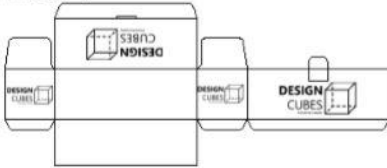
Laser cut and marked with stickers of our logos and how to play.



How to Play...

1. Role the dice.
2. Read the categories and think of an idea.
3. Draw your product. You have 45 seconds!
4. Share your product idea.
5. Best design wins (vote on your favourite).

packaging design



Costings

Costmap

Card - 10 boxes for 80p  
8p per box  
40 boxes for £3.20

Area of card = 2880 cm<sup>2</sup>  
2880 cm<sup>2</sup> ÷ 2640 cm<sup>2</sup> =

We can make 10 boxes per sheet of card

120 cubes = £4.50

Cube volume = 3x3x3 = 27 cm<sup>3</sup>  
2160 ÷ (3x3x3) = 80  
volume pipe (45mm x 45mm x 200mm)

We can make 80 cubes per 45 strip of pipe

80 cubes = £3.33  
120 cubes = £4.50

Total -

40 boxes for £3.20    120 cubes for £4.50  
40 full sets (cubes + packaging) = £7.70

3 cubes per set

Per full set = 19p (average)  
4 sets = 77p.